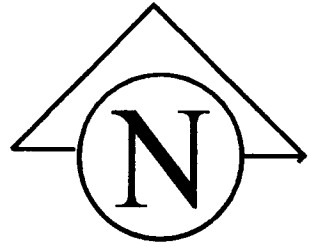


State of Wyoming Corner Record

(In compliance with the CORNER PERPETUATION AND FILING ACT, Wyoming Statutes, 1977, Section 36-11-101, et. seq., and the rules and Regulations of the Board of Registration for Professional Engineers and Professional Land Surveyors).

Reverse side of this form may be used if more space is needed.

Record of original survey and citation of source of historical information (if corner is lost or obliterated). Description of corner monumentation evidence found and/or monument and accessories established to perpetuate the location of this corner. Sketch of relative location of monument, accessories, and reference points with course and distance to adjacent corner(s) (if determined in this survey). Method and rationale for reestablishment of lost or obliterated corner.



No Scale
Date Prepared :
November 18, 1994

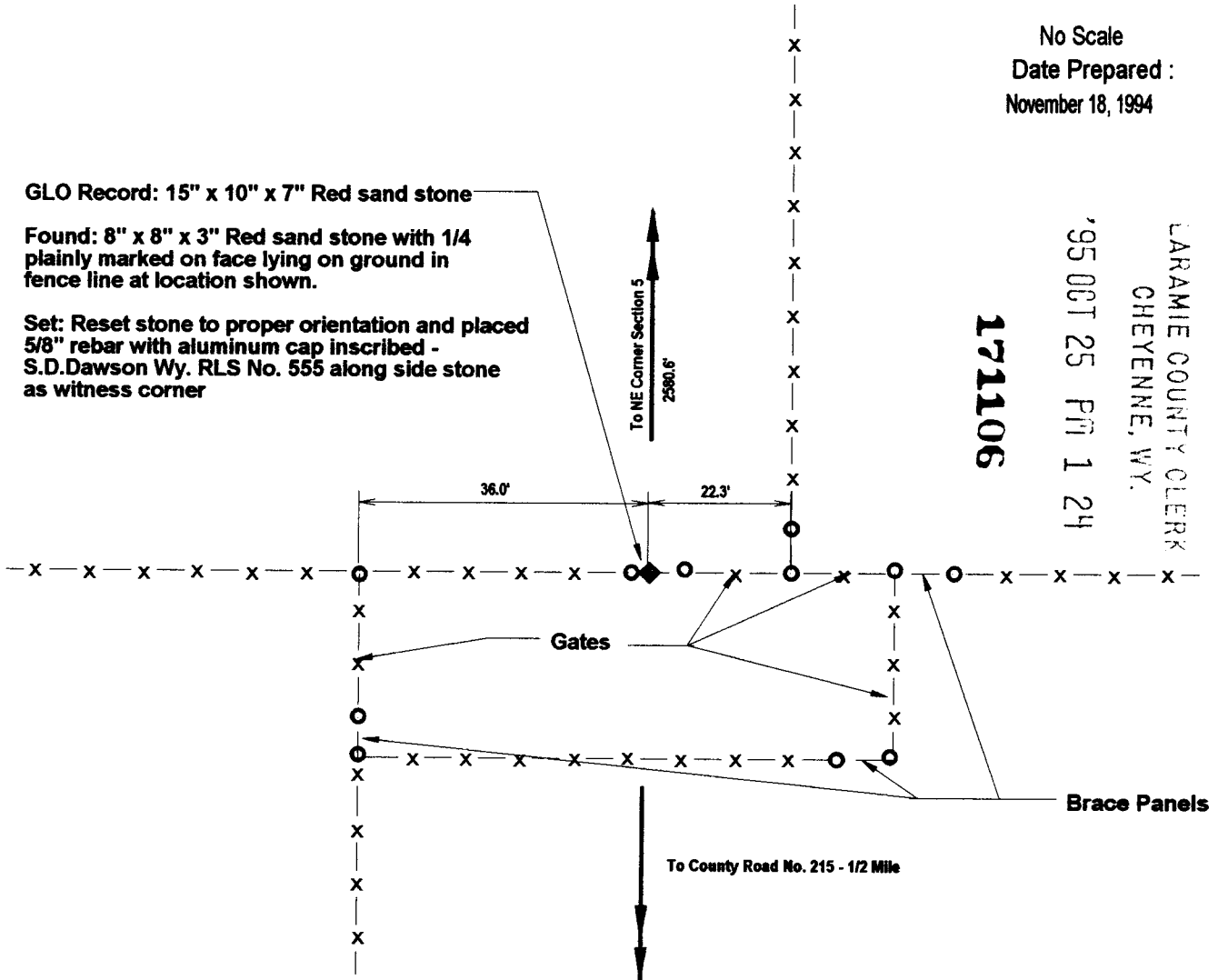
LARAMIE COUNTY CLERK
CHEYENNE, WY.
'95 OCT 25 PM 1 24

171106

GLO Record: 15" x 10" x 7" Red sand stone

Found: 8" x 8" x 3" Red sand stone with 1/4 plain marked on face lying on ground in fence line at location shown.

Set: Reset stone to proper orientation and placed 5/8" rebar with aluminum cap inscribed - S.D. Dawson Wy. RLS No. 555 along side stone as witness corner



Date of Field Work July 1994

Office Reference L.S. Ranch

CROSS INDEX DIAGRAM

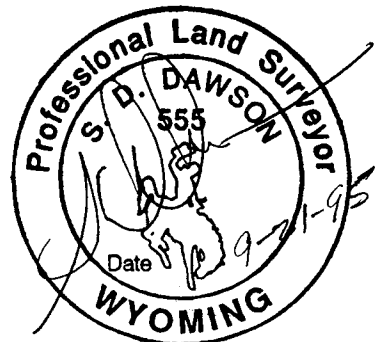
	1	2	3	4	5	6	7	8	9	10	11	12	13	14	15	16	17	18	19	20	21	22	23	24	25
A																									
B																									
C																									
D																									
E																									
F																									
G																									
H																									
I																									
J																									
K																									
L																									
M																									
N																									
O																									
P																									
Q																									
R																									
S																									
T																									
U																									
V																									
W																									
X																									
Y																									
Z																									

Firm / Agency, Address

Cornerstone Surveying Company
4005 Snyder Avenue
Cheyenne, Wyoming
Telephone Number 307 - 637 - 6958

This corner record was prepared by me or under my direction and supervision.

SEAL & SIGNATURE



Corner Name E 14 Section 5 T 14 R 64 6th P.M. Cross Index No. C-9
SBRPEPLS/PLSW: March 1994